



CHURCHILL

Over 5 Million items in stock..



GREAT Plates for...
Sharing Dishes
Burgers
Salads & More



The Colour Revolution

★
PUB & BAR
PORTFOLIO

OVER 2400 PRODUCTS IN OUR PORTFOLIO

Tabletop Inspiration for Casual Eateries & Drinking Spots

WHY CHURCHILL?

INNOVATIVE
NEW PRODUCT
LAUNCHES
3X A YEAR


EXTENSIVE
INDUSTRY
RESEARCH

OVER
5 MILLION
PIECES
IN STOCK

DURABLE
PRODUCTS
BUILT 
TO LAST IN 
A BUSY HOSPITALITY
KITCHEN

OVER
2400
PRODUCTS
IN OUR PORTFOLIO



See Pages:
X Squared 55
Retro Blue 53
Sola Durban 59

PUB & BAR PORTFOLIO

Casual Dining Inspiration

Welcome to our Bar & Pub Portfolio where we are showcasing a selection of our latest products in a casual dining setting. Bringing ideas and inspiration to the pub or bar tabletop, demonstrating how colour and shape innovation can add value to the dining experience.

Focusing on key dishes from casual dining menus, the portfolio offers creative solutions for sharers, healthy options, desserts and more.

CONTENTS

THE INDUSTRY	4 - 5
SHARING	6 - 9
BURGERS	10 - 13
FISH & CHIPS	14 - 17
WORLD FOOD	18 - 21
HEALTHY OPTIONS	22 - 25
BRITISH CLASSICS	26 - 29
BREAKFAST	30 - 33
SIDES	34 - 37
DESSERTS	38 - 41
HOT DRINKS	42 - 45

Free Samples -
Contact Head Office on:
01782 524517



Stoke Showroom
No.1 Marlborough Way,
Tunstall, Stoke-on-Trent,
ST6 5NZ, England

London Showroom
Business Design Centre,
Suite 102, 52 Upper Street,
Islington, London, N1 0QH

+44 (0)1782 577566 | info@churchill1795.com | www.churchill1795.com

f [churchill1795](https://www.facebook.com/churchill1795) | t [@churchill1795](https://twitter.com/churchill1795) | @churchill_1795

Sharing

47% of new independent eateries are offering some form of sharing plates or platters. Sharing dishes or platters are a popular, relaxed style of eating, proven to build relationships between diners.



The Industry

Colour Revolution

Our research shows that 64% of new openings are using coloured tableware. Bringing colour to the tabletop instantly adds value and creates a wow factor.



Eating more Drinking less

Consumers are drinking less alcohol and going out for a meal or a hot drink instead.

Social

Diners look for eateries with a strong social media presence, seeking out the perfect place to Instagram cocktails, craft beers, colourful desserts and meals.

f [churchill1795](#)
t [@churchill1795](#)
i [@churchill_1795](#)



Heat & Spice

Diners are becoming more adventurous, eager to try new dishes and seek out spicy world foods.



Sharers

Nothing brings people together like good food, from sharing small plates of sophisticated tapas or watching the sports over a few pints and a meat feast platter, to family style feasting for all ages.



NEW PRODUCT
Stonecast Hints

See Pages:
Stonecast Hints 49-50
Bit on the Side 54
Sola Lima 59

See Pages:
Wood 58
Bit on the Side 54



See Pages:
Melamine 58
Raku 51
Sola Durban 59

Nothing
brings people
TOGETHER
like good food



See Pages:
Homespun 52
Bit on the Side 54



See Pages:
Stonecast 48-49
Raku 51
Bit on the Side 54



Contact us on
01782 524 517

"Sharing food over a few drinks and good company brings people together, building friendships and breaking down barriers."

See Pages:
Stonecast Patina 50
Bit on the Side 54
Chefs' Plates 55
Evolve 56
Sola Windsor 59



Burgers



Burgers continue to grow in popularity, regularly being named the top selling dish on pub and bar menus. Whether classic cheese burgers or added value gourmet options, burgers continue to be the star on many menus. Serving up burgers on coloured plates enhances presentation and adds style.



Burgers - The UK's Favourite Dish of 2017



Lotus
Chefs' Plate

See Pages:
Chefs' Plates 55
Stonecast 48-49
Retro Blue 53



See Pages:
Chefs' Plates 55
Stonecast 48-49



See Pages:
Stonecast 48-49



See Pages:
Homespun 52
Plant Pots 53

See Pages:
Homespun 52
Stonecast 48-49

Homespun



Stonecast



Burgers
after named
TOP SELLING
dish on menus

"Burgers are big business, whether a gourmet patty or a stacked up 'man vs food' style burger, they always make the best selling list"



Stonecast Hints



See Pages:
Stonecast Hints 49-50
Bit on the Side 54

See Pages:
Homespun 52
Bit on the Side 54
White 56
Sola Windsor 59



See Pages:
Chef's Plates 55
Retro Blue 53
Sola Durban 59

Fish & Chips



Classic fish and chips remains a favourite on pub menus and chefs look for ways to add value or modernise this British dish. Diners are turning to nostalgic favourites, and coloured tableware can add to a retro or homely restaurant vibe.

Classic Fish & Chips
1980's
Were sold in newspapers until the
Patina



See Pages:
Stonecast Patina 50
Bit on the Side 54



See Pages:
Stonecast Hints 49-50
Bit on the side 54
Sola Durban 59



See Pages:
Stonecast 48-49

"The old time favourite of the British Isles, traditional fish and chips remains popular and chefs experiment with ways to innovate this classic dish."



Stonecast
Patina

See Pages:
Stonecast Patina 50
Bit on the Side 54



World Food



Social media exposes the world to international flavours and dishes.



As diners become more adventurous they seek out world flavours and we see Mexican tacos, authentic Indian street food and oriental dishes appearing on menus. Colourful tableware breathes life, culture and authenticity into world food options.

See Pages:
Raku 51
Bit on the Side 54
Cookware 53



See Pages:
Vintage Prints 53
Stonecast 48-49



See Pages:
Raku 51
Bit on the Side 54

Diners are more ADVENTUROUS than before.



Graphite
Wood

See Pages:
Stonecast 48-49
Wood 58

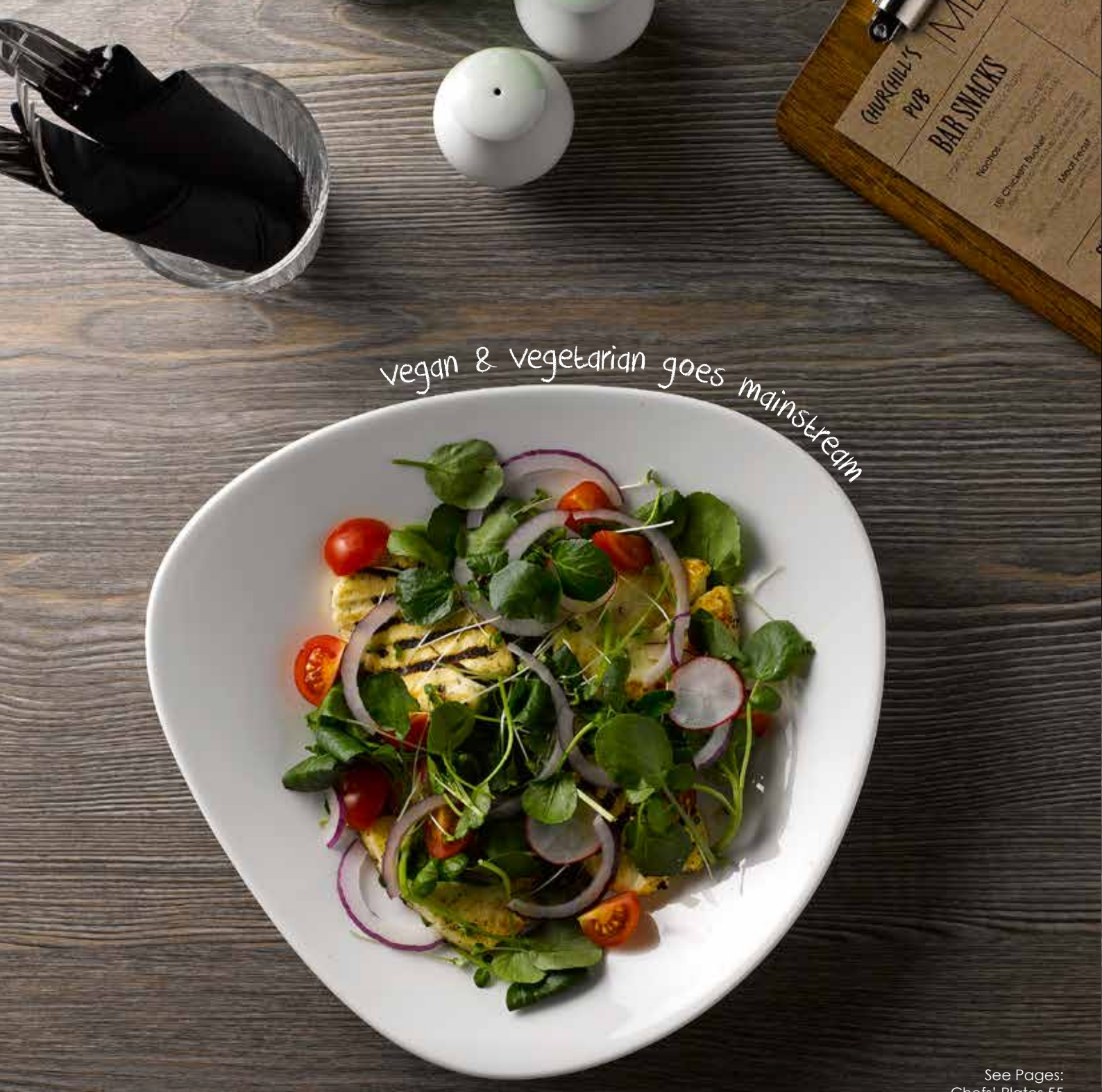
"Well travelled diners, global communities and adventurous consumers are making our menus more varied, with world spices, flavours and cooking techniques"



Contact us on
01782 524 517

See Pages:
Homespun 52
Bit on the Side 54
Sola Bali 59





vegan & vegetarian goes mainstream

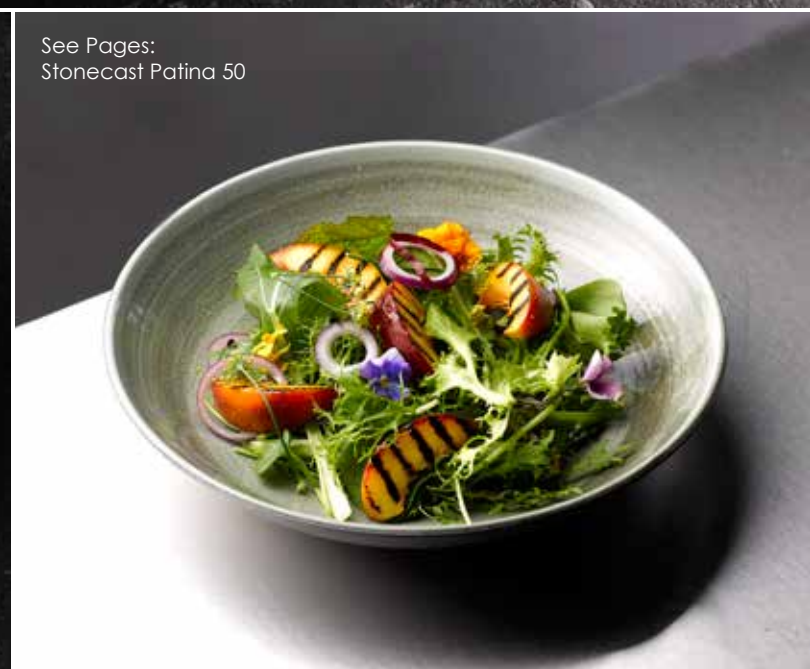
See Pages:
Chefs' Plates 55



See Pages:
Profile 55



See Pages:
Stonecast Patina 50



See Pages:
Homespun 52

Healthy Options

As diners strive to live healthier and cleaner lifestyles we see a rise in vegetarianism and other special dietary requirements. The casual dining industry is meeting the demand for healthy options with inventive, nutritional and sustainable menu choices.



Vintage Prints

See Pages:
Vintage Prints 53
Raku 51

Raku

Majority of adults are AIMING TO eat healthier

"A rise in vegetarians, vegans, gluten free diners and dieters means menus are adapting to offer exciting options for all speciality diets"



Contact us on
01782 524 517



See Pages:
Stonecast 48-49
Sola Windsor 59

Political turbulence sees diners seeking out hearty and homely comfort food classics



See Pages:
Stonecast 48-49
Retro Blue 53

British Classics



The nostalgic classics that any pub menu needs, including steak and chips, scampi, rustic pies and other comfort food pub grub. Chefs are regenerating old favourites with quality, local ingredients and innovative twists.

Stonecast Patina



See Pages:
Stonecast Patina 50
Sola Durban 59

Consumers

look for dishes
MADE WITH LOCAL
seasonal ingredients

See Pages:
Chefs' Plates 55
Plant Pots 53



See Pages:
Profile 55
Cookware 53



See Pages:
Vintage Prints 53
Stonecast 48-49



"A desire to embrace Britain's heritage, reduce food miles and support local business means diners look for their old favourites that are made with local, seasonal ingredients."



Stonecast
Blueberry

See Pages:
Stonecast 48-49
Retro Blue 53

Breakfast

Consumers are eating out as often for breakfast as they are for dinner, and the average spend per breakfast continues to rise. Diners are opting for relaxed, leisurely breakfasts with friends, partners or family while also seeking out more adventurous breakfast dishes.



Diners enjoy sociable & Indulgent weekend Brunches



Spicy world flavours come to the breakfast table



See Pages:
Stonecast Patina 50
Bit on the Side 54
Monochrome 57
Sola Durban 59



See Pages:
Homespun 52
Wood 58
Sola Donau 59

Diners eating out for BREAKFAST as often as for dinner



Stonecast Hints

Monochrome

See Pages:
Stonecast Hints 49-50
Stonecast 48-49
Monochrome 57
Sola Durban 59



See Pages:
Stonecast Hints 49-50
Monochrome 57



See Pages:
Stonecast 48-49

"Adding a hint of colour to the breakfast table with Retro Blue adds value and helps to stand out from the competition."



See Pages:
Chefs' Plate 55
Retro Blue 53
Sola Durban 59



Sides



Accompaniments to main courses or snacks to share with a few drinks. Side dish options on menus offer an opportunity to bring a hint of colour to the tabletop.



Added value sides... sweet potato fries, superfood side salads, mac & cheese, seasonal & local vegetables, artisan breads, grains & pulses.

See Pages:
Stonecast 48-49
Wood 58
Cookware 53
Rustics 54
Sola Lima 59



See Pages:
Lotus Chefs' Plates 55

Serve
it family
STYLE
to share



Stonecast
Hints

Stonecast

See Pages:
Stonecast Hints 49-50
Stonecast 48-49



See Pages:
Bit on the Side 54



See Pages:
Plant Pots 53

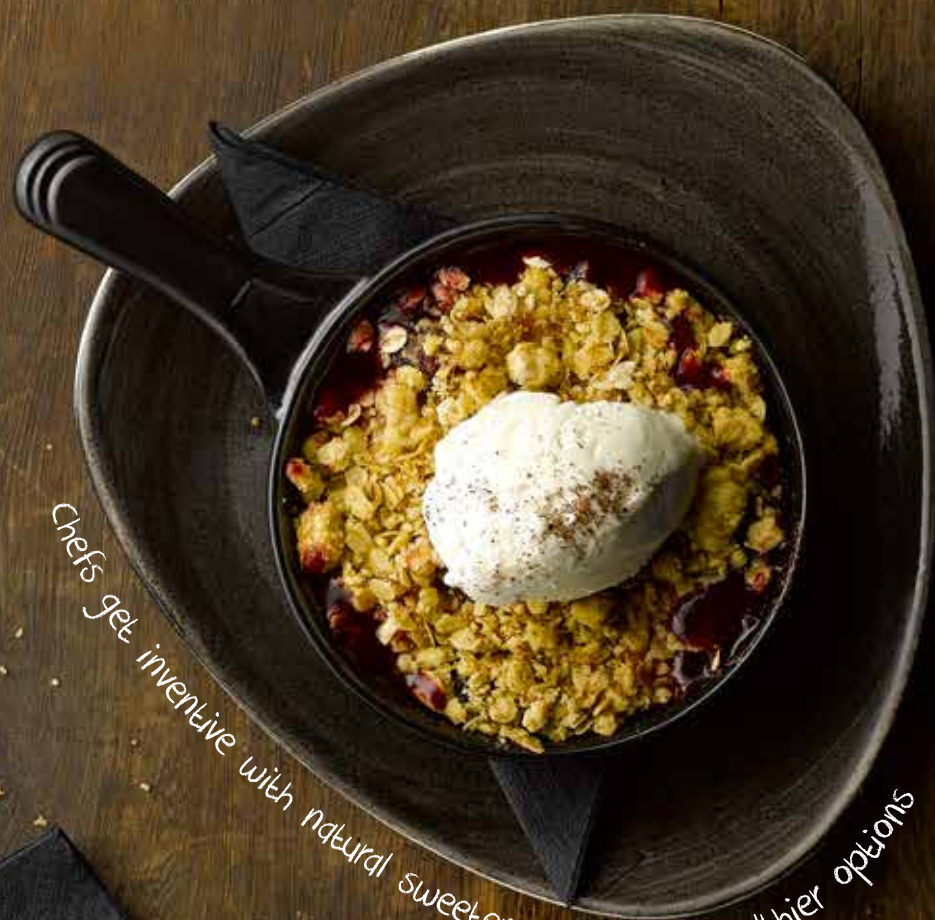
"Add value to side dishes with local ingredients, healthy options and coloured tableware"



Contact us on
01782 524 517

See Pages:
Retro Blue 53
Bit on the Side 54

Dessert



Chefs get inventive with natural sweeteners, creating healthier options

While diners may be striving for healthy lifestyles, there is always time to indulge and desserts are becoming more inventive, colourful and eye catching. Brightly coloured tableware creates a tabletop wow-factor for sweet treats.



"Diners seek out social media worthy desserts"



See Pages:
Stonecast 48-49
Sola Lima 59



Raku

See Pages:
Raku 51
Bit on the Side 54

*Consumers
are drinking less,
ORDERING PUDDINGS
instead of cocktails*



See Pages:
Stonecast 48-49
Chefs' Plates 55
Sola Lima 59



See Pages:
Stonecast 48-49

See Pages:
Rustics 54
Stonecast Patina 50
Sola Windsor 59

"Diners are eating healthier the majority of the time, and that means they deserve an indulgent, sweet treat once in a while."



Vintage Prints

See Pages:
Vintage Prints 53
Profile 55
Sola Lima 59



Contact us on
01782 524 517



Ted becomes more trendy with infusions, loose leaf tea and detox blends



Pubs and bars are comfortable and welcoming alternatives to the high street coffee shops. From business people having a meeting to shoppers taking a break, consumers are opting for a hot drink in a pub. Adding value to hot drinks offerings with barista style pouring, quality coffee roasts and stylish cups and teapots means pubs are competing with the high street.

See Pages:
Stonecast 48-49
Sola Durban 59

Hot Drinks



See Pages:
New Horizons 57
Bit on the Side 54
Profile 55



See Pages:
Homespun 52.



Stonecast



See Pages:
Monochrome 57

Coffee

is the 2nd most
POPULAR DRINK
in the world after water

See Pages:
Stonecast 47-48
Wood 58



Contact us on
01782 524 517



See Pages:
Stonecast 48-49
Sola Durban 59

"Bars and pubs become
evermore popular destinations
to enjoy a hot drink."

Product Solutions

Featuring the product information for the tabletop ideas and inspiration showcased in the Pub & Bar Portfolio. For full product ranges visit www.churchill1795.com

Contents

STONECAST®	48 - 49
STONECAST® HINTS	49 - 50
STONECAST® PATINA	50
STUDIO PRINTS® RAKU	51
STUDIO PRINTS® HOMESPUN	52
VINTAGE PRINTS	53
RETRO BLUE	53
BIT ON THE SIDE PLANT POTS	53
COOKWARE	53
BIT ON THE SIDE	54
RUSTICS	54
CHEFS' PLATES	55
PROFILE	55
EVOLVE	56
COUNTER SERVE	56
WHITE	56
MONOCHROME	57
NEW HORIZONS	57
BUFFETSCAPE WOOD	58
MELAMINE	58
SOLA	59



Stonecast®

For full item range see www.churchill1795.com

-  **Nutmeg Cream**
Code: SNMS
-  **Cornflower Blue**
Code: SCFS
-  **Peppercorn Grey**
Code: SPGS
-  **Duck Egg Blue**
Code: SDES
-  **Spiced Orange**
Code: SSOS
-  **Berry Red**
Code: SBRS
-  **Barley White**
Code: SWHS
-  **Mustard Seed Yellow**
Code: SMSS
-  **Blueberry**
Code: SBBS

Stonecast is available in nine colourways, refer to the colour guide to check what items are available in each colour. Replace the first four letters of the below product reference codes with the colour codes.



COUPE PLATE
SWHSEV121 32.4cm 12 1/4"
CTN QTY 6
SWHSEV111 28.8cm 11 1/4"
SWHSEV101 26cm 10 1/4"
CTN QTY 12
As seen on pages 15, 26, 28, 29



COUPE PLATE
SWHSEVP81 21.7cm 8 2/3"
SWHSEVP61 16.5cm 6 1/2"
CTN QTY 12
As seen on pages 34, 42, 45



COUPE BOWL
SWHSEVB91 24.8cm 9 3/4"
113.6cl 40oz
SWHSEVB71 18.2cm 7 1/4"
42.6cl 15oz
CTN QTY 12
As seen on pages 31



ORGANIC ROUND PLATE
SWHSOG111 28.6cm 11 1/4"
SWHSOG101 26.4cm 10 3/8"
SWHSOG8 1 21cm 8 1/4"
SWHSOG7 1 18.6cm 7 1/4"
CTN QTY 12
As seen on pages 11



DEEP COUPE PLATE
SWHSPD271 28.1cm 11" H: 3.7cm
SWHSPD251 25.5cm 10" H: 3.5cm
SWHSPD221 22.5cm 8 3/4" H: 2.7cm
CTN QTY 12
As seen on pages 19, 24, 25.



BARLEY WHITE CHEFS' OBLONG PLATE
No.4 SWHSXO141 35.5 x 18.9cm
13 7/8" x 7 3/8"
CTN QTY 6
No. 3 SWHSXO111 29.8 x 15.3cm
11 3/4" x 6"
CTN QTY 12



TRIANGLE PLATE
SWHSTR121 31.1cm 12 1/4"
CTN QTY 6
SWHSTR101 26.5cm 10 1/2"
SWHSTR9 1 22.9cm 9"
SWHSTR7 1 19.2cm 7 3/4"
CTN QTY 12
As seen on pages 28, 29, 39



TRIANGLE BOWL
SWHSTRB91 23.5cm 9 1/4"
60cl 21oz
SWHSTRB71 18.5cm 7 1/4"
37cl 13oz
SWHSTRB61 15.3cm 6"
26cl 9oz
CTN QTY 12
As seen on pages 19, 34, 39



ZEST BOWL
SWHSZE121 34cl 12oz
H: 6.5cm 4 1/8"
Dia: 12.1cm 2 1/2"
CTN QTY 12
As seen on pages 4, 5, 7



RIPPLE CHIP MUG
SWHSRPCM1 28cl 10oz
H: 9.5cm 3 3/8"
Dia: 8.3cm 3 1/4"
CTN QTY 12
As seen on pages 4, 7, 10, 11, 15, 19, 34



RIPPLE DIP POT
SWHSRPD21 11cl 4oz
H: 7cm 2 3/8"
Dia: 6.2cm 2 1/2"
CTN QTY 12
As seen on pages 11, 15, 19



BARLEY WHITE OVAL EARED DISH
SWHSIOEN1 23.2 x 12.5cm
9 1/8 x 5"
38cl 13.4oz
SWHSSOEN1 20.5 x 11.3cm
8 1/8 x 4 3/8"
25.5cl 9oz
CTN QTY 6
As seen on pages 27



BARLEY WHITE LASAGNE DISH
SWHSLASN1 16 x 12 x 5cm
6 3/8 x 4 3/4 x 2"
60cl 21.1oz
CTN QTY 12
As seen on pages 27



BARLEY WHITE ROUND EARED DISH
SWHSLREN1 17.5 x 21.5cm
7 x 8 1/2"
59cl 20.8oz
SWHSSREN1 15 x 18cm 5 7/8 x 7 1/8"
30cl 10.6oz
CTN QTY 6
As seen on pages 31, 35, 39



SAUCE DISH
SWHSSD3 1 9cl 3oz
H: 4cm Dia: 8cm
CTN QTY 12
As seen on pages 4, 7



CAPPUCCINO CUP
SWHSCB281 34cl 12oz
H: 6.5cm Dia: 11cm
CTN QTY 12
SWHSCB201 22.7cl 8oz
H: 5.5cm Dia: 9.5cm
CTN QTY 12
As seen on pages 42, 43, 44, 45



SAUCER
SWHSCSS 1 15.6cm 6 1/4"
CTN QTY 12
(Fits SWHSCB281 & SWHSCB201)
As seen on pages 42, 43, 44, 45



ESPRESSO CUP
SWHSCBE91 10cl 3.5oz
H: 5.5cm Dia: 6.5cm
CTN QTY 12



ESPRESSO SAUCER
SWHSESS 1 11.8cm 4 1/2"
CTN QTY 12
(Fits SWHSCBE91)



BEVERAGE POT
SWHSSB151 42.6cl 15oz
H: 15cm
CTN QTY 4
REPLACEMENT LID
SWHSRL151
CTN QTY 6
As seen on pages 42, 43, 44



JUG
SWHSSJ4 1 11.4cl 4oz
H: 7cm
CTN QTY 4
As seen on pages 42, 44



SUGAR BOWL
SWHSSSGR1 22.7cl 8oz
H: 6.2cm
Dia: 9.8cm
CTN QTY 12
As seen on pages 42, 45

CHURCHILL® super vitrified

Stonecast® Hints

For full item range see www.churchill1795.com



COUPE PLATE
SHBIEV121 32.4cm 12 3/4"
CTN QTY 6
SHBIEV111 28.8cm 11 1/4"
CTN QTY 12
SHBIEV101 26cm 10 1/4"
CTN QTY 12
SHBIEVP81 21.7cm 8 2/3"
CTN QTY 12
SHBIEVP61 16.5cm 6 1/2"
CTN QTY 12
As seen on pages 6, 12, 13, 35



COUPE BOWL
SHBIEVB91 24.8cm 9 3/4"
113.6cl 40oz
CTN QTY 12
SHBIEVB71 18.2cm 7 1/4"
42.6cl 15oz
CTN QTY 12



TRIANGLE PLATE
SHBITR121 31.1cm 12 1/4"
CTN QTY 6
SHBITR101 26.5cm 10 1/2"
CTN QTY 12
SHBITR9 1 22.9cm 9"
CTN QTY 12
As seen on page 6



TRIANGLE BOWL
SHBITRB91 23.5cm 9 1/4"
60cl 21oz
CTN QTY 12
As seen on page 6



TRIANGLE BOWL
SHBITRB61 15.3cm 6"
26cl 9oz
CTN QTY 12
As seen on page 6



CHEFS' OBLONG
PLATTER No.9
SHBIXP141 35.5 x 24.5cm
13 7/8 x 9 5/8"
CTN QTY 6
As seen on page 6



CHEFS' OBLONG PLATE No.4
SHBIXO141 35.5 x 18.9cm
13 7/8 x 7 5/8"
CTN QTY 6
As seen on page 6
CHEFS' OBLONG PLATE No.3
SHBIXO111 29.8 x 15.3cm
11 1/4 x 6"
CTN QTY 12
As seen on page 35



OVAL PLATE
SHBID12 1 30.5cm 12"
CTN QTY 12
SHBID10 1 25.4cm 10"
CTN QTY 12
As seen on pages 15, 31

CHURCHILL® super vitrified

Stonecast® Patina

For full item range see www.churchill1795.com

Burnished Green
Code: PABG

Antique Taupe
Code: PAAT

Iron Black
Code: PAIB

Vintage Copper
Code: PAVC



COUPE PLATE
PABGEV121 32.4cm 12 1/4"
CTN QTY 6
PABGEV111 28.8cm 11 1/4"
PABGEV101 26cm 10 1/4"
PABGEVP81 21.7cm 8 2/3"
PABGEVP61 16.5cm 6 1/2"
CTN QTY 12
As seen on pages 8, 9, 30



COUPE BOWL
PABGEVB91 24.8cm 9 3/4"
113.6cl 40oz
CTN QTY 12
PABGEVB71 18.2cm 7 1/4"
42.6cl 15oz
CTN QTY 12
As seen on page 23



TRIANGLE PLATE
PABGTR121 31.1cm 12 1/4"
CTN QTY 6
PABGTR9 1 22.9cm 9"
CTN QTY 12
PABGTR7 1 19.2cm 7 1/4"
CTN QTY 12
As seen on pages 15, 16, 17, 38



TRIANGLE BOWL
PABGTRB91 23.5cm 9 1/4"
60cl 21oz
CTN QTY 12
PABGTRB61 15.3cm 6"
26cl 9oz
CTN QTY 12



CHEFS' OBLONG PLATE
No.4 PABGXO141 35.5cm x 18.9cm
13 7/8" x 7 5/8"
CTN QTY 6
No.3 PABGXO111 29.8cm x 15.3cm
11 1/4" x 6"
CTN QTY 12
As seen on page 27



WIDE RIM BOWL
PABGVWBL1 28cm 11"
46.8cl 16.5oz
CTN QTY 12



ORGANIC ROUND PLATE
PABGOG111 28.6cm 11 1/4"
PABGOG101 26.4cm 10 5/8"
PABGOG8 1 21cm 8 1/4"
PABGOG7 1 18.6cm 7 1/4"
CTN QTY 12



ORGANIC ROUND BOWL
PABGOGB11 25.3cm 9 7/8"
110cl 38oz
CTN QTY 12

Stonecast Patina is available in four colourways, refer to the colour guide to check what items are available in each colour. Replace the first four letters of the below product reference codes with the colour codes.

CHURCHILL® super vitrified

STUDIO® PRINTS Raku

For full item range see www.churchill1795.com

Topaz Blue
Code: RKTB

Quartz Black
Code: RKBQ

Garnet Orange
Code: RKGO

Agate Grey
Code: RKAG

Jade Green
Code: RKJG



COUPE PLATE
RKBQEV111 28.8cm 11 1/4"
RKBQEV101 26cm 10 1/4"
RKBQEV81 21.7cm 8 2/3"
RKBQEV61 16.5cm 6 1/2"
CTN QTY 12
As seen on pages 7, 23



COUPE BOWL
RKBQEV891 24.8cm 9 3/4"
113.6cl 40oz
RKBQEV71 18.2cm 7 1/4"
42.6cl 15oz
CTN QTY 12



OVAL COUPE PLATE
RKBQOP121 31.7 x 25.5cm
12 1/2 x 10"
RKBQOP581 27 x 22.9cm
10 5/8 x 9"
CTN QTY 12



CHEFS' OBLONG PLATE
No.9 RKTBP141 35.5 x 24.5cm
13 7/8" x 9 5/8"
No.8 RKBQOBL41 30 x 19.9cm
12" x 7 7/8"
CTN QTY 6
No.7 RKBQOBL31 26.1 x 20.2cm
10 1/4" x 8"
CTN QTY 12



CHEFS' OBLONG PLATE
No.4 RKBQXO141 35.5 x 18.9cm
13 7/8" x 7 5/8"
CTN QTY 6
No.3 RKBQXO111 29.8 x 15.3cm
11 1/4" x 6"
CTN QTY 12
As seen on pages 7, 39



LOTUS CHEFS' TRIANGLE PLATE
RKBQTC351 35 x 19cm
13 3/4" x 7 1/2"
RKBQTC301 30 x 20cm
11 4/5" x 7 4/5"
CTN QTY 6
As seen on page 19



LOTUS CHEFS' TRIANGLE PLATE
RKBQTC261 26 x 20cm
10 1/4" x 7 4/5"
CTN QTY 12



LOTUS SHALLOW TRIANGLE BOWL
RKBQTB231 23.8 x 15.8cm
9 2/3" x 6 1/4"
RKBQTB271 27.8 x 19.8cm
10 13/32" x 7 4/5"
CTN QTY 12



DEEP COUPE PLATE
RKAGPD271 28.1cm 11" H: 3.7cm
RKAGPD251 25.5cm 10" H: 3.5cm
RKAGPD221 22.5cm 8 5/8" H: 2.7cm
CTN QTY 12
As seen on page 18



COUPE PLATE
RKAGEV111 28.8cm 11 1/4"
RKAGEV101 26cm 10 1/4"
CTN QTY 12



COUPE PLATE
RKAGEVP81 21.7cm 8 2/3"
RKAGEVP61 16.5cm 6 1/2"
CTN QTY 12



OVAL PLATE
RKAGOP121 31.7 x 25.5cm
12 1/2 x 10"
RKAGOP581 27 x 22.9cm
10 5/8 x 9"
CTN QTY 12

Raku is available in five colourways, refer to the colour guide to check what items are available in each colour. Replace the first four letters of the below product reference codes with the colour codes.

STUDIO® PRINTS

Homespun

For full item range see www.churchill1795.com

-  **Slate Blue**
Code: SPSB
-  **Charcoal Black**
Code: SPCB
-  **Stone Grey**
Code: SPSG



COUPE PLATE
SPSGEV111 28.8cm 11 1/4"
SPSGEV101 26cm 10 1/4"
SPSGEVP81 21.7cm 8 3/8"
SPSGEVP61 16.5cm 6 1/2"
 CTN QTY 12 ✪ ●●●●
 As seen on pages 7, 11



OVAL COUPE PLATE
SPSGOP121 31.7 x 25.5cm
 12 1/2" x 10"
SPSGOP581 27 x 22.9cm
 10 5/8" x 9"
 CTN QTY 12 ✪ ●●●●
 As seen on pages 20, 21



RIMMED PLATE
SPSGVP581 27.6cm 10 7/8"
SPSGVP101 26.1cm 10 1/4"
 CTN QTY 12 ✪ ●●●●
 As seen on page 31



RIMMED PLATE
SPSGVP8 1 21cm 8 1/4"
SPSGVP651 17cm 6 5/8"
 CTN QTY 12 ✪ ●●●●



WIDE RIM BOWL
SPSGVWBL1 28cm 11"
 46.8cl 16.5oz
SPSGVWBM1 24cm 9 1/2"
 28.4cl 10oz
 CTN QTY 12 ✪ ●●●●
 As seen on page 23



CHEFS' OBLONG PLATE
 No4 **SPSGXO141** 35.5 x 18.9cm
 13 7/8" x 7 3/8"
 CTN QTY 6 ●●●●
 No3 **SPSGXO111** 29.8 x 15.3cm
 11 3/4" x 6"
 CTN QTY 12 ●●●●
 As seen on pages 11, 14



BEVERAGE POT
SPSGSB151 42.6cl 15oz
 CTN QTY 4 ●●●●
REPLACEMENT LID
SWHSRL151
 CTN QTY 6 ●●●●
 As seen on page 31



CAPPUCCINO CUP
SPSGCB201 22.7cm 8oz
 H: 5.5cm
 Dia: 9.5cm
 CTN QTY 12 ✪ ●●●●
 As seen on pages 31, 43



SAUCER
SPSGCS1 15.6cm 6 1/4"
 (Fits SPSCB201)
SPSGESS1 11.8cm 4 1/2"
 CTN QTY 12 ✪ ●●●●
 (Fits SPSCB91)
 As seen on pages 31, 43



SUGAR BOWL
SPSGSSGR1 22.7cl 8oz
 H: 6.2cm
 Dia: 9.8cm
 CTN QTY 12 ✪ ●●●●
 As seen on page 31



JUG
SPSGSJ4 1 11.4cl 4oz
 H: 7cm
 CTN QTY 4 ●●●●
 As seen on page 31



ESPRESSO CUP
SPSGCEB91 10cl 3.5oz
 H: 5.5cm
 Dia: 6.5cm
 CTN QTY 12 ✪ ●●●●

Vintage Prints

For full item range see www.churchill1795.com



GREY ROSE CHINTZ PLATE
RCG VP111 30.5cm 12"
 CTN QTY 6 ✪
RCG VP8 1 21cm 8 1/4"
 CTN QTY 6 ✪
 As seen on pages 19, 23



PRAGUE TOILE DEEP COUPE PLATE
TOP PD271 28.1cm 11" H: 3.7cm
 CTN QTY 12 ✪
TOP PD251 25.5cm 10" H: 3.5cm
 CTN QTY 12 ✪
 As seen on pages 19, 40, 41



PRAGUE TOILE DEEP COUPE PLATE
TOP PD221 22.5cm 8 7/8" H: 2.7cm
 CTN QTY 12 ✪



CRANBERRY TOILE CHEFS' OBLONG PLATE
TOC XO141 35.5 x 18.9cm
 13 7/8" x 7 3/8"
 CTN QTY 6
TOC XO111 29.8cm x 15.3cm
 11 3/4" x 6"
 CTN QTY 12
 As seen on pages 27

Retro Blue

For full item range see www.churchill1795.com



ROUND PIE DISH
WHBBRPDN1 13.5cm 5 1/4"
 50cl 17.6oz
 CTN QTY 12
 As seen on pages 26, 36, 37



RAMEKIN
WHBBLRKN1 9cm 3 1/2"
 19.5cl 6.9oz
WHBBSRKN1 7cm 2 3/4"
 9cl 3.2oz
 CTN QTY 24
 As seen on pages 2, 3, 10, 15, 26, 28, 29, 32, 33

Bit on the side Plant Pots

For full item range see www.churchill1795.com



PEBBLE PLANT POT
BCPEPL121 9 x 9.7cm
 2 7/8" x 3 7/8"
 34cl 12oz
 CTN QTY 12
 As seen on pages 11, 27, 35



PEBBLE PLANT POT
BCPEPL2 1 5.5 x 5.8cm
 2 1/4" x 2 1/4"
 5.7cl 2oz
 CTN QTY 12
 As seen on pages 11, 27

Cookware

For full item range see www.churchill1795.com

Cookware is available in three colourways, refer to the colour guide to check what items are available in each colour. Replace the first four letters of the below product reference codes with the colour codes.

-  **White**
Code: WH

-  **Black**
Code: BCBK

-  **Red**
Code: RED



LARGE RAMEKIN
BCBKLRKN1 9cm 3 1/2"
 19.5cl 6.9oz
 CTN QTY 24 ○●●●
 As seen on page 18



SMALL RAMEKIN
BCBKSrKN1 7cm 2 3/4"
 9cl 3.2oz
 CTN QTY 24 ○●●●
 As seen on pages 14, 34



ROUND PIE DISH
BCBKRPDN1 13.5 x 5cm
 5 1/4" x 2"
 50cl 17.6oz
 CTN QTY 12 ○●●●
 As seen on page 27

Bit on the side is available in five colourways, refer to the colour guide to check what items are available in each colour. Replace the first four letters of the below product reference codes with the colour codes.

Bit on the side

For full item range see www.churchill1795.com

-  **White**
Code: WH
-  **Cinnamon**
Code: BCBR
-  **Sapphire**
Code: BCBL
-  **Ripple Green**
Code: BCGR
-  **Onyx**
Code: BCBK



RIPPLE DIP POT
BCBRRPD41 7 x 6.2cm
2 7/8" x 2 1/2"
11cl 4oz
CTN QTY 12 
BCBRRPD21 5.9 x 5cm
2 1/3" x 2"
5.7cl 2oz
CTN QTY 12 
As seen on pages 7, 8, 9, 15, 16, 17, 19, 20, 21, 39, 43



RIPPLE CHIP MUG
BCBRRPCM1 9.5 x 8.3cm
3 7/8" x 3 1/4"
28cl 10oz
CTN QTY 12 
As seen on pages 12, 13, 15, 36



SNACK BOWL
BCBRRP101 12 x 5.7cm
4 7/8" x 2 1/4"
28cl 10oz
CTN QTY 12 
As seen on pages 6, 7, 8, 9, 12, 13, 15, 16, 18, 30



RIPPLE DIP DISH
WH RPDD1 11.3 x 3.5cm
4 1/2" x 1 1/3"
14cl 5oz
CTN QTY 12 
As seen on page 7



RIPPLE BOWL
BCBRSBRP1 13 x 7.4cm
5 1/8" x 2 7/8"
56cl 19.7oz
CTN QTY 6 
As seen on page 35



RIPPLE SNACK BOWL
BCBRRP6 1 10.4 x 4.9cm
4" x 2"
17cl 6oz
CTN QTY 12 



LID/SIDE PLATE
BCBRSBLD1 14.6cm 5 1/2"
CTN QTY 6 

Rustics

For full item range see www.churchill1795.com



DEEP SKILLET PAN
ZCBRPN2 1 24.5cm 9 5/8"
57cl 20oz
CTN QTY 6



SMALL SKILLET PAN
ZCBRPN1 1 23cm 9"
37cl 13oz
CTN QTY 6
(Fits Lid ZCBRLD1 1)
As seen on pages 34, 38



LIDDED STEW POT
ZCBRLSPT1 14cm 5 1/2"
43cl 15oz
CTN QTY 6



REPLACEMENT LID
ZCBRLD1 1
CTN QTY 6
(Fits ZCBRHPD 1 & ZCBRPN1 1)

Chefs' Plates & Lotus

For full item range see www.churchill1795.com



CHEFS' TRIANGLE PLATE
WH TC35 1 35 x 19cm
13 3/4" x 7 1/2"
CTN QTY 6
WH TC30 1 30 x 20cm
11 1/4" x 7 7/8"
CTN QTY 6
As seen on pages 10, 11



CHEFS' TRIANGLE PLATE
WH TC26 1 26 x 20cm
10 1/4" x 7 7/8"
CTN QTY 12
As seen on page 39



TRIANGLE SHALLOW BOWL
WH TB27 1 27.8 x 19.8cm
10 7/8" x 7 3/4"
CTN QTY 12
WH TB23 1 23.8 x 15.8cm
9 3/8" x 6 1/4"
CTN QTY 12
As seen on pages 22, 35



CHEFS' OBLONG PLATE
No. 9 **WH XP141** 35.5 x 24.5cm
13 7/8" x 9 5/8"
CTN QTY 6
No. 8 **WH OBL41** 30 x 19.9cm
12" x 7 7/8"
CTN QTY 6
As seen on pages 2, 3, 8, 9, 27, 32, 33



CHEFS' OBLONG PLATE
No. 7 **WH OBL31** 26.1 x 20.2cm
10 1/4" x 8"
CTN QTY 12
No. 6 **WH OBL21** 23.7 x 15.7cm
9 1/3" x 6 1/8"
CTN QTY 12



CHEFS' OBLONG PLATTER
No. 4 **WH XO141** 35.5 x 18.9cm
13 7/8" x 7 3/8"
CTN QTY 6
No. 3 **WH XO111** 29.8 x 15.3cm
11 1/4" x 6"
CTN QTY 12
As seen on page 15



CHEFS' OBLONG PLATE
No. 2 **WH XO101** 26.9 x 12.7cm
10 1/2" x 5"
CTN QTY 12
No. 1 **WH XO7 1** 20 x 12.1cm
7 7/8" x 4 3/4"
CTN QTY 12



CHEFS' OBLONG PLATE
No. 5 **WH OBL11** 15.4 x 12.6cm
6" x 5"
CTN QTY 12

Profile

For full item range see www.churchill1795.com



PROFILE DEEP COUPE PLATE
WH PD271 28.1cm 11"
CTN QTY 12 
WH PD251 25.5cm 10"
CTN QTY 12 
WH PD221 22.5cm 8 5/8"
CTN QTY 12 
As seen on page 23



PLATE
WH VP131 33cm 13"
WH VP111 30.5cm 12"
WH VP581 27.6cm 10 7/8"
WH VP101 26.1cm 10 1/4"
WH VP9 1 23.4cm 9 1/8"
WH VP8 1 21cm 8 1/4"
WH VP651 17cm 6 5/8"
CTN QTY 12 
As seen on page 27



JUG
WH SJ8 1 22.7cl 8oz
H: 8.5cm
CTN QTY 4
WH SJ4 1 11.4cl 4oz
H: 7cm
CTN QTY 4



JUG
WH SJ2 1 5.6cl 2oz
H: 5cm
CTN QTY 12
As seen on pages 40, 43

CHURCHILL® super vitrified

Evolve

For full item range see www.churchill1795.com



COUPE PLATE
WH EV121 32.4cm 12¾"
CTN QTY 6 ✦



COUPE PLATE
WH EV111 28.8cm 11¼"
CTN QTY 12 ✦



COUPE PLATE
WH EV101 26cm 10¼"
CTN QTY 12 ✦



COUPE PLATE
WH EVP81 21.7cm 8½"
CTN QTY 12 ✦
As seen on pages 8, 9



COUPE PLATE
WH EVP61 16.5cm 6½"
CTN QTY 12 ✦



COUPE BOWL
WH PLC21 31cm 12"
240cl 84.5oz
CTN QTY 6 ✦



COUPE BOWL
WH EVB91 24.8cm 9¾"
113.6cl 40oz
CTN QTY 12 ✦



COUPE BOWL
WH EVB71 18.2cm 7¼"
42.6cl 15oz
CTN QTY 12 ✦

CHURCHILL® super vitrified

Counter Serve

For full item range see www.churchill1795.com



STRAIGHT SIDED
DELI JAR
WH SDJ 1 11cm 4¾"
51cl 18oz
CTN QTY 4
As seen on pages 8, 9

CHURCHILL® super vitrified

White

For full item range see www.churchill1795.com



MINI SAUCE BOAT
WH MSB 1 11.2cl 4oz
H: 6.5cm
Dia: 11cm
CTN QTY 6



BUTTER PAD
WH BP 1 10cm 4"
CTN QTY 24



VINEGAR / OIL BOTTLE
WH VB 1 16cl 6oz
H: 13cm
CTN QTY 6



SANDRINGHAM
SALT & PEPPER
WH SS 1 8.4cm 3¼"
CTN QTY 12
WH PS 1 8.4cm 3¼"
CTN QTY 12
As seen on page 14

CHURCHILL® super vitrified

Monochrome

For full item range see www.churchill1795.com

Monochrome is available in three colourways, refer to the colour guide to check what items are available in each colour. Replace the first four letters of the below product reference codes with the colour codes.

Sapphire
Code: MOBL
Saucer: MOMB

Cinnamon
Code: MOBR
Saucer: MOVC

Onyx
Code: MOBK
Saucer: MOIB

White
Code: WH
Saucer: WH



CAPPUCCINO CUP
MOBLCB281 34cl 12oz
H: 6.5cm
Dia: 11cm
CTN QTY 12 ✦ ●●●●
MOBLCB201 22.7cl 8oz
H: 5.5cm
Dia: 9.5cm
CTN QTY 12 ✦ ●●●●
As seen on pages 30, 31, 34



SAUCER
MOMBCSS 1 15.6cm 6¼"
CTN QTY 12 ✦ ●●●●
(Fits MOBLCB281, MOBRBC281, MOBKC281,
MOBLCB201, MOBRBC201, MOBKC201,
MOBLVM121, MOBRVM121 & MOBKVM121)
MOMBESS 1 11.8cm 4½"
CTN QTY 12 ✦ ●●●●
(Fits MOBLCB91, MOBRCEB91 & MOBKCEB91)
As seen on page 30



ESPRESSO CUP
MOBLCB91 10cl 3.5oz
H: 6.5cm
Dia: 5.5cm
CTN QTY 12 ✦ ●●●●



MUG
MOBLVM121 34cl 12oz
H: 11cm
Dia: 8cm
CTN QTY 12 ✦ ●●●●
As seen on page 43



BOWL
MOBLRBL61 13.2 X 6.3cm
5½" X 2½"
47cl 16oz
CTN QTY 12 ●●●●



SMALL COUPE SAUCER
WH BS4 1 12cm 4¾"
CTN QTY 24 ✦



LARGE COUPE SAUCER
WH BS6 1 16cm 6¼"
CTN QTY 24 ✦

CHURCHILL® super vitrified

New Horizons

For full item range see www.churchill1795.com



CAFE LATTE MUG
● HOROMCL 1 34cl 12oz
● HORBMCL 1 34cl 12oz
● HORYMCL 1 34cl 12oz
● HORGML 1 34cl 12oz
CTN QTY 12



CAFE LATTE MUG
● HORBCLL1 22.4cl 8oz
● HORYCCL1 22.4cl 8oz
● HORGCCLL1 22.4cl 8oz
● HOROCCLL1 22.4cl 8oz
CTN QTY 24



CAPPUCCINO CUP
● HORGCB281 28cl 10oz
● HOROCB281 28cl 10oz
● HORBCB281 28cl 10oz
● HORYCB281 28cl 10oz
CTN QTY 24



CAPPUCCINO CUP
● HOROCB201 19.6cl 7oz
● HORBCB201 19.6cl 7oz
● HORYCB201 19.6cl 7oz
● HORGCB201 19.6cl 7oz
CTN QTY 24
As seen on page 43



ESPRESSO CUP
● HORYCEB91 9cl 3oz
● HORGCEB91 9cl 3oz
● HOROCEB91 9cl 3oz
● HORBCEB91 9cl 3oz
CTN QTY 24



SMALL COUPE SAUCER
WH BS4 1 12cm 4¾"
CTN QTY 24 ✦



LARGE COUPE SAUCER
WH BS6 1 16cm 6¼"
CTN QTY 24 ✦

buffetscape® wood

For full item range see www.churchill1795.com



LARGE WOODEN CRATE
ZCAWLWCR1 38 x 24 x 4.8cm
 15" x 9½" x 1¾"
ZCAWMWCR1 30 x 20 x 4.8cm
 11¾" x 7¾" x 1¾"
 CTN QTY 4



SMALL WOODEN CRATE
ZCAWSMCR1 30 x 11.8 x 4.8cm
 11¾" x 4¾" x 1¾"
 CTN QTY 4



LARGE RECTANGULAR STAND
ZCAWLRST1 42.7 x 18.4 x 15.5cm
 16¾" x 7¼" x 6"
 CTN QTY 2



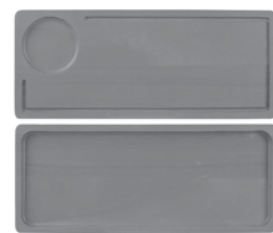
LARGE ROUND STAND
ZCAWLRST1 H: 15cm 5¾"
 Dia: 25cm 9¾"
ZCAWSRST1 H: 10cm 4"
 Dia: 15cm 6"
 CTN QTY 4
 As seen on page 7



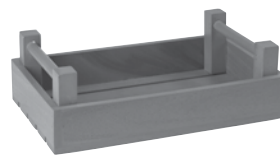
SMALL ORGANIC BOARD
ZCAWOB21 32 x 17cm
 12¾" x 6¾"
ZCAWOB31 24 x 12.5cm
 9½" x 5"
 CTN QTY 4
 As seen on page 7



LARGE ORGANIC BOARD
ZCAWOB11 45.5 x 14.5cm
 18" x 5¾"
 CTN QTY 4
 As seen on page 7



LARGE GRAPHITE DELI BOARD
ZCAWGGDD1 40 x 16.5cm
 15¾" x 6½"
 CTN QTY 4
 As seen on page 34



RECTANGULAR GRAPHITE CRATE
ZCAWRGTC1 34 x 20 x 10cm
 13 x 7¾ x 3¾"
 CTN QTY 4
 As seen on page 19



ACACIA LARGE BOARD
ZCAWLMBD1 20 x 29cm
 7¾" x 11¾"
 CTN QTY 4
 As seen on page 43



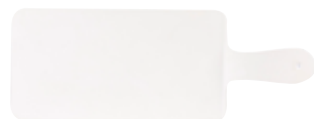
RECTANGULAR CRATE/RISER
ZCAWRCTC1 33 x 20 x 10cm
 13" x 7¾" x 4¾"
 CTN QTY 4



SQUARE CRATE/RISER
ZCAWSQRC1 20 x 20 x 10cm
 7¾" x 7¾" x 4¾"
 CTN QTY 4

Melamine

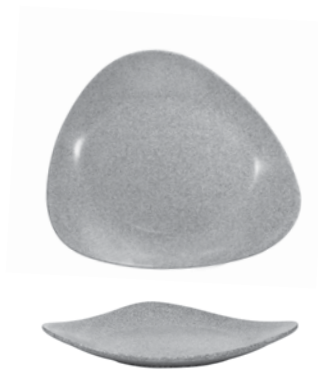
For full item range see www.churchill1795.com



WHITE HANDLED PADDLE BOARD
ZPL HPW1 26.6 x 14cm
 10½" x 5½"
 CTN QTY 4
 (37.3cm inc handle
 14 5/8" inc handle)
 As seen on page 7



GRANITE HANDLED PADDLE BOARD
ZPL HPG1 26.6 x 14cm
 10½" x 5½"
 CTN QTY 4
 (37.3cm inc handle
 14 5/8" inc handle)
 As seen on page 7



GRANITE LOTUS MELAMINE PLATTER
ZPL GLP41 35 x 32.5cm 13¾" x 12¾"
 CTN QTY 4

Durban

For full item range see www.churchill1795.com



TABLE FORK
11DURB021 21.2cm
 5.0mm
 CTN QTY 12
 As seen on page 15, 27, 30, 31, 32, 33



TABLE KNIFE
11DURB112 24cm
 8.5mm
 CTN QTY 12
 As seen on pages 15, 27, 30, 32, 33

Lima

For full item range see www.churchill1795.com



TABLE FORK
11LIMA021 20.8cm
 3.5mm
 CTN QTY 12
 As seen on pages 6, 34



TABLE KNIFE
11LIMA112 23.7cm
 7.5mm
 CTN QTY 12
 As seen on page 6

Windsor

For full item range see www.churchill1795.com



TABLE FORK
11WIND021 20.8cm
 3.0mm
 CTN QTY 12
 As seen on pages 14, 25



TABLE KNIFE
11WIND111 24.5cm
 7.0mm
 CTN QTY 12
 As seen on page 14

Donau

For full item range see www.churchill1795.com



TABLE FORK
11DONA021 21.2cm
 5.0mm
 CTN QTY 12
 As seen on page 31



TABLE KNIFE
11DONA112 23.5cm
 8.0mm
 CTN QTY 12
 As seen on page 31

Bali

For full item range see www.churchill1795.com



TABLE FORK
11BALI021 20.8cm
 3.5mm
 CTN QTY 12
 As seen on pages 20, 21



TABLE KNIFE
11BALI112 23.7cm
 7.5mm
 CTN QTY 12
 As seen on pages 20, 21



CHURCHILL®

churchill1795.com

f Churchill1795

@churchill1795

@Churchill_1795

Tel: +44 (0) 1782 577 566

Fax: +44 (0) 1782 524 355

email: info@churchill1795.com

HEAD OFFICE & STOKE SHOWROOM

No. 1 Marlborough Way
Tunstall
Stoke-on-Trent
ST6 5NZ

LONDON SHOWROOM

Business Design Centre
Suite 102
52 Upper Street
Islington
London
N1 0QH

MADRID SHOWROOM

Calle Princesa No 2
7ta Planta
Puertas 4 y 5
Madrid 28008
España
Tel: 910 004 929



In the printing of this brochure, every effort has been made to ensure perfect reproduction of product colours, but due to printing limitations, they may not be an exact match to the actual product.